



AGENDA
CHARTER TOWNSHIP OF MERIDIAN
LAND PRESERVATION ADVISORY BOARD
REGULAR MEETING & SITE VISIT
Wednesday June 12, 2024 6:00 pm
Tihart Land Preserve
1000 Tihart Road, Okemos MI 48864

1. CALL MEETING TO ORDER
2. PUBLIC COMMENT
3. APPROVE AGENDA
 - A. June 12, 2024
4. APPROVE MINUTES
 - A. April 10, 2024
5. COMMUNICATIONS
 - A. None.
6. DISCUSSION ITEMS
 - A. Tihart Preserve
 - A. Land use history
 - B. Past & present stewardship efforts
 - C. Future goals and projects
7. REPORTS
 - A. STAFF REPORT: Stewardship Coordinator, Emma Campbell
 - a. Update on current preservation projects & issues
 - b. MCC June Stewardship Calendar
 - B. ENVIRONMENTAL COMMISSION REPORT: Board Member, Yu Man Lee
 - C. PARK COMMISSION REPORT: Board Member, Mark Stephens
8. PUBLIC COMMENT
9. OTHER MATTERS AND BOARD MEMBERS' COMMENTS
10. ANNOUNCEMENTS
 - A. Next Land Preservation Advisory Board Meeting: Wednesday, July 10, 2024 at 6 pm at the Meridian Township Service Center, 2100 Gaylord C. Smith Court, Haslett Michigan 48840.
11. ADJOURNMENT

Individuals with disabilities requiring auxiliary aids or services should contact the Meridian Township Land Preservation Advisory Board by contacting: Director Courtney Wisinski, 5151 Marsh Road, Okemos, MI 48864 or 517.853.4600 - Ten Day Notice is Required.

Meeting Location: 1000 Tihart Road, Okemos, MI 48864

Providing a safe and welcoming, sustainable prime community.





CHARTER TOWNSHIP OF MERIDIAN
LAND PRESERVATION ADVISORY BOARD REGULAR MEETING MINUTES
Township Service Center
2100 Gaylord C. Smith Court | Haslett, MI
Wednesday, April 10, 2024, 6 PM

PRESENT: Board Members: Jamie Hiller, Steve Thomas, Kris Parnell, Kathy Fay, Mark Stephens, Yu Man Lee.
ABSENT: Trustee Marna Wilson
STAFF: Emma Campbell, Stewardship Coordinator
TOWNSHIP: None.

1. CALL MEETING TO ORDER

Chair hiller called the meeting to order at 6:02 pm

2. PUBLIC COMMENT

A. None.

3. APPROVE AGENDA

A. April 10, 2024

Board member Fay moved to approve the April 10, 2024 Agenda to place on file. Board member Thomas seconded.

Voice vote: unanimous.

4. APPROVE MINUTES

A. February 14, 2024

Board member Stephens makes a motion to place the February 14, 2024 minutes on file as amended. Board member Parnell seconded.

Voice vote: Unanimous.

5. COMMUNICATIONS

A. Marna Wilson is the newly appointed Township Board Trustee to the Land Preservation Advisory Board.

B. Lucy Breda and Jennifer Soria are introduced as the newly hired Stewardship Coordinator Assistant and Stewardship Field Assistant. Board members also introduce themselves to the new employees.

7. DISCUSSION ITEMS

A. Ribbon cutting ceremony in May or June for preservation signage

a. Combine efforts into the Reclaim Davis project and host a stewardship event to discuss the impact of dogs on trails at the preserves.

Minutes – Land Preservation Advisory Board

April 10, 2024

Page 2 of 6

- i. There has been increasing conflict with dogs off leash as well as dog poop on the trails at Davis Foster Preserve. Conflict has occurred between public with dogs off leash and community members who walk the trail as well as with Township staff.
 - b. Unveil the rule signage and discuss good recreation and stewardship of preserves.
 - c. Partner with Meridian Police, HOMTV and local news if possible
 - d. Invite Meridian Conservation Corps volunteers to help plant native species for an additional stewardship effort.
 - b. Education on the state law to leash any dogs on public land, as well as the local ordinance at the Township level.
 - c. Reach out to police, Sarah, HOMTV to see if they are available the week of the 13th in May, or other dates in June.
- B. Acquisition
 - a. Re-evaluate the ecological inventory and the screening process for potential acquisitions by board members
 - b. Acquisition process; discuss updates and changes to bring to the Township Board for review and recommendation
 - a. Board members comments:
 - i. Wait for Trustee Wilson to discuss this issue with the board and await further clarification and direction.
 - ii. Look to the Greenspace Plan and see if we can align with and support any of those goals.
 1. Climate Sustainability Plan (CSP)
 - iii. Community Surveys for Land Preservation Program; survey residents about why preserves are important to them and why they believe they are an important part of the Township
 1. Would they like to see additions to the land preservation program if ecologically valuable land became available
 - iv. A 'Legacy Program' may be needed to ensure the goals and ideals of program can easily roll over to future boards
 - v. A concern that has been expressed from Township Board Members is land preserves not being a taxable property. If this is a concern, is the LPAB able to cover such taxes as incentive to purchase properties of ecological value?
 - c. Conservation easements as a potential addition to steward ecological valuable land in the Township.
 - a. Developers wanting greenspace to increase the value of the land
 - b. Wetland banking and carbon offset credits
 - C. Wetland setback ordinance; revisions outlined in Master Plan
 - a. Ask Director Wisinski to the June 12 meeting
 - b. Wetland Education Survey – keep it big picture and focus on broad efforts and knowledge that community members may be aware of.
 - D. Televised Land Preservation Advisory Board meetings
 - a. Bring more light to the stewardship efforts and the land preservation program
 - b. Highlight volunteers at this meeting

Minutes – Land Preservation Advisory Board

April 10, 2024

Page 3 of 6

- c. If LPAB decides to move forward with this, plan for once a year. Either at the beginning or end of year to talk about accomplishments and goals.

8. REPORTS

A. STAFF REPORT: Stewardship Coordinator, Emma Campbell

- a. Update on current preservation projects & issues
 - i. Recap for board members absent at January meeting; 2023 Annual Report for Stewardship, 2024 Land Preservation and Stewardship Goals, Update on preservation signage, New Land Preservation name signage, brochure and updated map

B. ENVIRONMENTAL COMMISSION REPORT: Commissioner Yu Man Lee

- a. Green Grants were awarded, \$20,000 awarded total to 8 grants
 - i. Tracking for grants – required reporting and follow up for awarded projects.
 - ii. Screening process to ensure productive plants are being installed for any planting projects.
- b. Climate Sustainability Funding is at \$30,000 that is open to all aspects of CSP, not just wetland education
 - i. Wetland Education and Outreach Program was funded with \$10,000
 - ii. EC is asking for proposals to designate funds
 - 1. Projects should align with the CSP and Township Master Plan
 - 2. Deadline is April 20th
 - iii. Joint meeting and working discussion with EC.
 - 1. This would be a great opportunity to talk about overlapping goals and how LPAB and EC can accomplish more together for certain issues and projects.

C. PARK COMMISSION REPORT: Commissioner Mark Stephens

- a. Park Commission was not interested in Pike Crossing Preserve as a park.

9. PUBLIC COMMENT

- A. None.

10. OTHER MATTERS AND BOARD MEMBERS' COMMENTS

- A. None.

11. ANNOUNCEMENTS

- A. Next Land Preservation Advisory Board Meeting: Wednesday, June 12, 2024 at 6 pm at the Township Service Center, 2100 Gaylord C. Smith Court, Haslett, MI 48840.

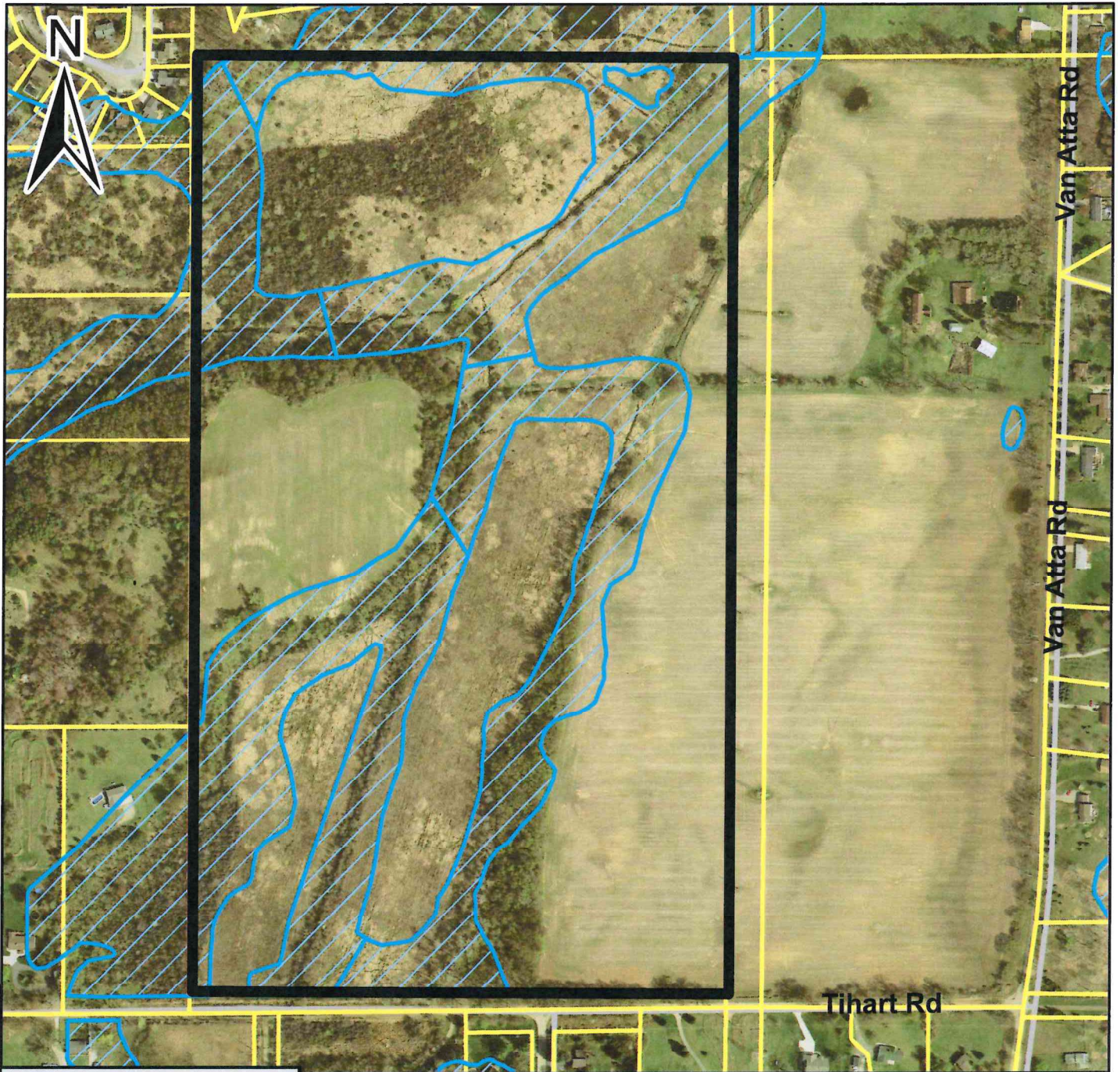
12. ADJOURNMENT

Board member Fay moved to adjourn the meeting. Board member Parnell seconded.


Voice vote: Unanimous

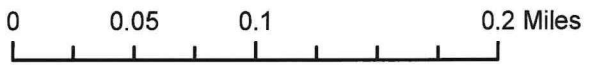
Chair Hiller adjourned the meeting at 8:07 pm.

Tihart Preserve



Legend

-  Tihart Preserve
-  Parcels
-  Wetland
-  Roads



Parcel Number: 33-02-02-14-200-006
Area: 90 acres



Wetlands

100' Buffer

Farm Area

Piper Rd

Virginia Rd

75 acres

950'

915'

800'

1,050'

DRAIN

DITCH

DITCH

950'



Tihart Preserve Management & Stewardship

Invasive Species Management

1. Herbaceous species management:

- a. Garlic mustard; between the farmland and the edge of the wetland. Spring ephemerals are present, May apples, spring beauties, and butter cups.



i.

- b. Spotted knapweed; located throughout historically farmed areas. Dense patches in some areas, but mostly individuals throughout.

- i. Mostly prevalent where native species are not yet growing and thriving. A good management method may be to compete with as well as pull knapweed.



1.

- c. Reed canary grass; this is one of the priority species for management.

- i. Not yet fully established, small to medium sized patches throughout historically farmed areas. Surrounding wetlands are inundated and are a seed/spreading source for the rest of the preserve.
 - ii. Chemical management is ongoing; contractual management is planned, but stewardship staff may take on the work for the 2024 season.
- d. Non-native thistles; field and bull thistle are establishing, but have responded well to mechanical and chemical management thus far.
- i. Small to medium dense patches of field thistle. Individuals also scattered throughout the area.

2. Woody Species Management

- a. Autumn Olive; present throughout drier/upland sites of preserve
 - i. Has been managed since 2021 with cut-stump treatment by staff and volunteers. Plants cut will have to be managed again this year with basal bark chemical spray and/or cut-stump treatment.
 - ii. Contractual management desired for back upland area with lots of remnant shrubby St. Johns wort present. This stand has matured and is a big job to remove.



- 1.
- b. Siberian Elm; tree species spreading as a thick dense cluster on the NW edge of the farm field. This species is spreading quickly and densely and will most likely need contractual management for removal.
 - c. Common buckthorn; individuals and some small to medium patches along the edge of the wetland areas

- i. Can be managed with basal bark and cut-stump treatment by staff and volunteers

Native Plant Restoration & Management

1. Remnant native species to note - some of these species are included to notate the presence of a remnant wetland seed bank in the historically farmed area of the preserve. *(ongoing list and not comprehensive)*

- Shrubby St. Johns wort (*Hypericum prolificum*)
- Great blue lobelia (*Lobelia siphilitica*)
- Joe pye weed (*Eutrochium maculatum*)
- Wild bergamot (*Monarda fisulosa*)
- Swamp milkweed (*Asclepias incarnata*)



- Fox sedge (*Carex vulpinoidea*)



- Horsetail/scouring rush
- White and red oak species
- Hickory species
- Dogwood species

2. 2021-2022 Native plantings (seed collected from parks and preserves at remnant sites)

- Transplanting site; mountain mint, Joe pye weed, Solidago hispida, Solidago speciosa
 - Lots of deer browse and mortality. Mountain mint was the most successful at this site and is currently thriving.
- Seed sowing; big bluestem, wafer ash, wild bergamot, mountain mint, bottle brush grass, purple meadow rue, whorled milkweed

3. 2023 planting

- Transplanted area; fencing it in improved species survival
 - Species planted: butterfly weed, golden alexander, showy goldenrod, robin's plantain. Plants are doing very well, high bloom rate.





-
- **2023 Seed Sowing;** Butterfly weed, early goldenrod, false solomon's seal, flat-topped aster, hairy bushclover, hazelnut, common boneset, big bluestem, mountain mint, showy goldenrod, shrubby St. Johns wort, thimbleweed, tick trefoil (panickedleaved, pointed-leaved, perplexed), witch hazel, pussytoes, big leaved aster, arrowleaf aster, pignut hickory, white turtlehead, virgin's bower, flowering dogwood, robin's plantain, running strawberry bush, ghost plant, foxglove beardtongue, American plum, Red oak, Carolina rose, black-eyed susan, white blue-eyed grass, bristly greenbrier, blue-stemmed goldenrod, horse gentian, golden alexander



4. 2024 brush hogging; 5 acres of the front SE planting area was brush hogged down to 6 inches

- This is to open up sunlight for seedlings and plantings from the past three years. Encouraging growth of native seedlings is the priority at this point.

Wildlife & Insect species (ongoing list)

- Batlimore checkerspot



- Monarch butterfly
- Eastern tiger swallowtail
- American kestrel
- Eastern meadowlark
- Red tail hawk
- American woodcock

Future Management and Projects

1. Our main goal with this preserve is to continue to remove and manage priority invasive species, and plant/sow native species into the area
 - a. We will transplant and seed some areas closer to the northern half of the ‘farm field’ to integrate more native species into this site
 - i. Invasive species are more dense in this area, so we will continue to nurture the areas that are doing the best
2. Access trails for staff and stewardship will be created and continue to evolve. These will not be established for walking paths, but for access to complete stewardship work. They will not be maintained year round unless staff needs them maintained.

3. Wetland areas will be inventoried and a plan for management will be enacted - these spaces have tougher invasive species to manage, so these are not necessarily priority sites at the moment