

CHARTER TOWNSHIP OF MERIDIAN
LAND PRESERVATION ADVISORY BOARD

MEETING AGENDA
WEDNESDAY, SEPTEMBER 14, 2016
6 PM – SERVICE CENTER

1. Call Meeting to Order
2. Approve Agenda
3. Public Remarks
4. Approve Minutes, July 26, 2016 regular meeting
5. Communications
6. Old Business
7. New Business (orchid)
8. Land Management Coordinator and Land Stewardship Assistant Report (green)
9. Public Comment
10. Closed Session (separate envelope)
11. Other
12. Announcements
13. Adjournment



Land Preservation Advisory Board Meeting

Approval of Minutes

CHARTER TOWNSHIP OF MERIDIAN
LAND PRESERVATION ADVISORY BOARD

MEETING MINUTES
WEDNESDAY, JULY 26, 2016
6 PM – SERVICE CENTER

Members Present: Julie Brixie, Roland Harmes, Frank Hatfield James Kielbaso, Jon Mayes, Margo Smith

Members Absent: Yu Man Lee, Mark Stephens

Staff: Jane Greenway, Senior Parks and Land Management Coordinator;
Kelsey Dillon, Land Stewardship Assistant; Robin Faust, Parks and
Recreation Administrative Assistant II

1. Call Meeting to Order

Chair Kielbaso called the meeting to order at 6 pm.

2. Approve Agenda

BOARD MEMBER BRIXIE MOVED, BOARD MEMBER MAYES SECONDED, TO APPROVE THE AGENDA AS SUBMITTED. Voice vote. Motion passed.

3. Public Remarks

None

4. Approve Minutes

- a. June 8, 2016 Meeting Minutes
- b. July 13, 2016 Towar Woods Site Visit Notes

BOARD MEMBER BRIXIE MOVED, BOARD MEMBER HATFIELD SECONDED, TO APPROVE THE JUNE 8, 2016 MEETING MINUTES AND JULY 13, 2016 TOWAR WOODS SITE VISIT NOTES AS SUBMITTED. Voice vote. Motion passed.

5. Communications

- August 10, 2016 Southwest Meridian Uplands Preserve Tour

Hearing no objection, Chair Kielbaso accepted the communication for filing.

6. Closed Session

BOARD MEMBER SMITH MOVED, BOARD MEMBER BRIXIE SECONDED, TO MOVE INTO CLOSED SESSION.

Roll Call:

AYES: Jon Mayes, Frank Hatfield, Margo Smith, Roland Harnes, Julie Brixie,
Jim Kielbaso

NAYS: None

The Board entered into closed session at 6:05 pm.

BOARD MEMBER SMITH MOVED, BOARD MEMBER MAYES SECONDED,
TO RETURN TO OPEN SESSION.

ROLL CALL:

AYES: Jon Mayes, Frank Hatfield, Margo Smith, Roland Harnes, Jim
Kielbaso

NAYS: None

The Board returned to open session at 7:22 pm.

CHAIR KIELBASO MOVED, BOARD MEMBER MAYES SECONDED, FOR
STAFF TO PROCEED AS DISCUSSED DURING CLOSED SESSION. Voice
vote. Motion passed.

7. Other

None

8. Announcements

None

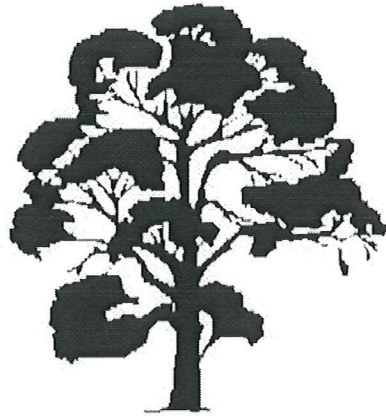
9. Public Remarks

None

10. Adjournment

BOARD MEMBER HATFIELD MOVED, BOARD MEMBER MAYES
SECONDED, TO ADJOURN THE MEETING.

The meeting adjourned at 7:23 pm.



Land Preservation Advisory Board Meeting

Communications

Jane Greenway

From: Jane Greenway
Sent: Thursday, September 08, 2016 1:35 PM
To: Kielbaso, James (kielbas3@anr.msu.edu); JON MAYES (jtmayes@sbcglobal.net)
Cc: Stephens, Mark (steph143@anr.msu.edu); 'hatfield@egr.msu.edu'; 'Roland Harmes'; 'margo.smith@chm.msu.edu'; Yu Man Lee; Julie Brixie; Kelsey Dillon; LuAnn Maisner; Robin Faust
Subject: A message from LuAnn Maisner - Congratulations, Kelsey!

Dear LPAB,

When the Land Preservation program began in 2000, the first ten years were dedicated mainly toward acquisition. The millage was renewed again in 2010 at a reduced rate. Although limited acquisition has occurred, the primary focus has been placed on stewardship. Up to now, these activities have been handled partly by Jane as well as by part-time staff. We have been made aware on numerous occasions that our efforts are not meeting the expectation of the Land Preservation Advisory Board and other community members.

Today, I am pleased to announce that Kelsey Dillon will be increased to full-time status beginning September 19. She will mainly be responsible for stewardship activities in Land Preserves and other appropriate township-owned properties. Kelsey has been working on a part-time basis for over a year and has proven herself to be extremely capable in land management and as well as community engagement.

Please join me in welcoming and congratulating Kelsey!

LuAnn Maisner, CPRP
Director of Parks and Recreation
Charter Township of Meridian
517-853-4604

CHARTER TOWNSHIP OF MERIDIAN

Elizabeth Ann LeGoff Supervisor
Brett Dreyfus Clerk
Julie Brixie Treasurer
Frank L. Walsh Manager



Milton L. Scales Trustee
Ronald J. Styka Trustee
John Veenstra Trustee
Angela Wilson Trustee

August 31, 2016

Ms. Rita F. Stoskopf
Joe D. Pentecost Foundation
1651 Lake Lansing Road, Suite 100
East Lansing, MI 48823

RE: LETTER OF SUPPORT FOR GRANT, TOWAR COMMUNITY CONCERNS COMMITTEE

Dear Ms. Stoskopf:

With great enthusiasm, I write this letter of support on behalf of Meridian Township for the grant application developed by Towar Community Concerns Committee (TC3). The grant proposes to purchase trees and tree-planting equipment as part of a site restoration project within a 125-acre natural area known as the Towar Woods Land Preserve. The trees will be planted by local community groups including Scouts, Sea Cadets, school groups, church groups, and members of the Towar Gardens neighborhood.

Towar Gardens community (TC3) volunteers, led by former Meridian Township Land Preservation Advisory Board Member, Dave Caszatt, have banded together for the past 10 years to drastically improve the look and ecological health of the Towar Woods Land Preserve. TC3 has helped organize hundreds of youth volunteers and dozens of work days where community members have helped remove debris, maintain trails, and restore the integrity of this natural area. Kelsey Dillon, Meridian Stewardship Assistant, helps to manage the reforestation plan and coordinate the volunteer work dates. An abundance of wildlife, native plant species, and landscape diversity creates many opportunities for enjoyment through education and passive recreation within the Towar Woods Land Preserve.

TC3 is a long-standing, valuable partner to the residents of Meridian Township. Their hard work has helped provide essential funding for our free summer recreation program for local youth. Their support has also provided funding for numerous after-school and summer learning programs. Many of these programs involve nature education. This valuable natural space in Meridian Township provides woods and trails could be enjoyed by generations, far beyond all of us, and a tree planting program would be a fine legacy for all of Meridian Township.

Thank you for your consideration.

Yours truly,

A handwritten signature in cursive script that reads "Jane L. Greenway".

Jane L. Greenway, Senior Parks and Land Management Coordinator



Cost of April, 2017, Planting of Hardwood Seedlings:

150	2' by 3' mixed hardwood seedlings @ \$10 ea. =	\$1,500.00
150	Blue X growing tubes @ \$2.33 ea. =	350.00
150	Metal support posts @ \$4.00 ea. =	600.00
5	gallons glyphosate for grass & weed control	150.00
2.5	gallons triclopyr + adjuvant oil (for woody invasive shrub control)	400.00

Total \$3,000.00

Meridian Township – Community Mobile Tool Shed – 2016 - CRCF

1. PURPOSE OF GRANT

- a. **Statement of needs/problems to be addressed, description of target population and how it will benefit.** The Parks Department is frequently presented with opportunities to take advantage of volunteer labor to assist with the care and maintenance of their nearly 2,000 acres of parks and land preserves. The challenge they often face is the lack of organized and proper tools to equip the volunteers. We feel the best way to address this problem would be to purchase and equip a small, enclosed trailer with the tools necessary to complete most light duty landscaping tasks. The additional maintenance that will be able to be performed will benefit everyone who visits the Meridian parks. Facilities will be cleaner, playgrounds will be better maintained, invasive species will be managed, and the overall park user experience will be better because of the additional maintenance that we will be able to complete. We feel there will also be a benefit to the potential volunteers and volunteer groups by giving them an opportunity to create a sense of ownership with the parks and other public spaces. Some volunteer groups are actually *required* to participate in community activities, so we feel like we would be doing them as service as well by providing them the tools and opportunities.

- b. **Description of project goals and objectives.** Our proposed project involves purchasing an enclosed trailer, approximately 7' x 16' and outfitting it with landscaping tools. This trailer would be stored at a township facility and used for volunteer landscaping and maintenance projects. Our first objective would be to purchase the trailer. We would use the Meridian Township purchasing procedures already in place, to request at least three bids from reputable suppliers, with a preference given to local companies. Following that we would work with a local retailer to negotiate the best prices for the tools we would need. At a minimum the proposed tools needed would include but not be limited to: shovels, rakes, brooms, wheelbarrows, root ball carts, and a gas powered leaf blower. Following the purchase of the trailer and tools, our next goal would be to successfully implement volunteer projects. During the spring and summer months, the Parks Department staff is in contact with various groups almost weekly discussing volunteer opportunities. If this trend continues, utilizing the trailer and tools should be no problem at all.

- c. See item B.

- d. **Timetable for implementation.** Our timetable to complete this project would be to have the trailer and tools purchased before May 1, 2017. Many of the volunteer requests we receive occur during the spring and summer months so we would like to be prepared.

- e. ***Who are the other partners in the project and what are their roles?*** The Parks Department will be the lead and will assume a majority of the responsibility. Our department works with various volunteer organizations that offer to do landscape maintenance work, so they will share in the maintenance and use of the trailer and equipment. We consider these groups to be just as much of a partner as the Meridian staff who will be overseeing the projects.
- f. ***Acknowledge similar existing projects or agencies, if any, and explain how your agency or proposal differs, and what effort will be made to work cooperatively.*** There currently is not a similar project or effort taking place within the township relative to a community tool trailer. We typically rely on our grounds crew to deliver equipment to the parks for volunteer use. This can be time consuming for staff and difficult on weekends when there is not staff to collect the equipment at the parks. Having this trailer to work from would greatly increase the scope of work volunteer groups like this could complete.
- g. ***The township staff members that would be responsible for the success of this program include:***
LuAnn Maisner, CPRP, Director, Meridian Township Parks and Recreation Department. Ms. Maisner has been the director of Meridian Township Parks since 2000 and has developed and overseen numerous successful park and stewardship projects.
Jane Greenway, LLA, Senior Parks and Land Management Coordinator, Meridian Township Parks and Recreation. Ms. Greenway is a licensed landscape architect with 20 years of experience in all aspects of landscape construction, design, and maintenance along with natural resource management, including invasive species treatment, wetland mitigation, and habitat development.
Kelsey Dillon, Stewardship Coordinator, Meridian Township Parks and Recreation. Ms. Dillon is the lead staff person for volunteer projects and is very talented at working with large volunteer groups. She has successfully managed numerous park clean-up programs, tree planting programs, and invasive species management days. Kelsey is a favorite with our local scouting and school groups because she makes their volunteer days so much fun!
- h. ***Long-term strategies for funding this project at end of grant period.*** Following the end of the grant period, the Parks Department will include future funding in their annual maintenance budget. The only future costs we can foresee would be to replace any equipment that may get damaged during the normal maintenance operations. We anticipate this cost to be minimal for the first five years.

- i. **List the top five reasons the Community Foundation should fund this proposal.** The top five reasons why we feel the Community Foundation should fund this proposal are (1) Volunteerism creates community spirit through peoples, parks, and places. (2) the aesthetic and ecological benefits to the Meridian Township parks and land preserves, whether it be within the parks system or other public spaces and rights-of-way; (3) reducing the financial burden for maintaining the parks with seasonal employees; (4) creating a safer and more efficient work environment for our volunteers by providing them with the proper tools for the job they're doing; (5) the benefits the volunteers get from developing a sense of ownership through volunteering; and the benefits the volunteers who are required by their respective organizations to volunteer "x" number of hours each year.

2. EVALUATION (If funded, and the grant is \$2,500 or more, the Community Foundation will supply an Evaluation form to be completed by the end of the one-year grant period.)

- a. Evaluating the success of our project would begin with physically looking at the trailer and tools purchased. The true success of our project however will be determined at the end of the first and second year that the tool trailer has been in use, looking at how much maintenance and beautification work was completed, how many volunteers contributed time and resources, and the cost of labor hours saved by utilizing volunteer labor.
- b. **Plans for evaluation including how success will be defined and measured.** Our annual report lists the number of volunteers who have assisted the township along with the specific work that was conducted. We acknowledge all of our volunteers at an annual Friend-of-the-Park BBQ that is typically attended by nearly 150 people. If the Foundation desires to inspect the trailer and tools, a visit may be arranged with LuAnn Maisner, Director of Parks and Recreation or Jane Greenway, Senior Parks and Land Management Coordinator. You may reach LuAnn at maisner@meridian.mi.us or Jane at greenway@meridian.mi.us As far as looking at projects completed by the volunteers, you may contact LuAnn for that as well. It would be best to schedule those visits in September or October.

3. ADDITIONAL INFORMATION

The Meridian Township Department of Parks and Recreation continually strives to increase their ability to serve our residents by providing opportunities for recreation and environmental education. Due to a limited budget, the Parks and Recreation depends greatly on our community volunteers who collectively donate thousands of volunteer hours each year to local community service projects.

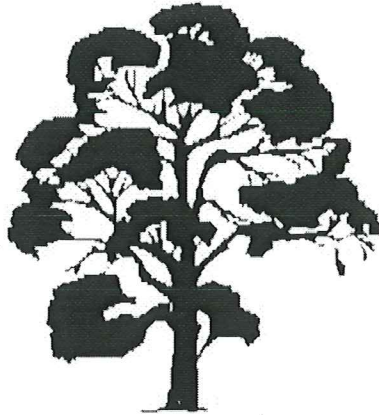
The Parks and Recreation Department is dedicated to making Meridian Township a more vital and vibrant place to live through programs, special events, and development, improvement, protection, and management of publicly-owned parks and natural areas. This is accomplished through the dedicated efforts of the Park Commission, Land Preservation Advisory Board, an enthusiastic staff of 14 full-time parks and recreation employees, numerous part-time and seasonal staff, and many passionate volunteers from the community. Together, they managed 904 acres of parkland, over 80 miles of pedestrian/bicycle pathway, more than 20 miles of nature trails, the Harris Nature Center, Snell-Towar Recreation Center, Meridian Senior Center, year-around Farmers' Market, 85 acres of Township grounds, 755.5 acres of land preserves, two (2) cemeteries, and a wide variety of community recreation programs, special events and senior activities.

We facilitate numerous volunteer events throughout the year that include schoolchildren, seniors, MSU students, and others. **In 2015 alone the parks and recreation department recognized 1,906 volunteers who spent a total of 31,708 hours improving the parks and land preserves. At an estimated volunteer value of \$23.07/hour this equals \$731,504 in volunteer support!** Our hugely popular LOVE A PARK DAY would greatly benefit from a mobile tool shed that could move from park to park providing equipment for the volunteers.

4. CONCLUSION

The support and engagement from residents and organizations in parks and recreation programs is just one more element contributing to the greatness of our community. The giving of time, money, and knowledge continue to strengthen the ties between residents, businesses and government. A mobile tool shed would greatly streamline our support and would allow many hands to make light work.

Thank you for your consideration of our grant application.



Land Preservation Advisory Board Meeting

New Business

MERIDIAN TOWNSHIP

TO: Land Preservation Advisory Board

FROM: Jane Greenway
Jane Greenway
Land Management Coordinator

Kelsey Dillon
Kelsey Dillon
Land Stewardship Assistant

DATE: September 10, 2016

RE: Motion for Invasive Shrub Removal at Towar Woods



Background

The eastern portion of the Towar Woods Land Preserve has been the focus of long term ecological restoration for 5+ years. The invasive plant Buckthorn has completely taken over the northern part (see map) of the preserve. Volunteer efforts have been successful but slow in the removal of these large shrubs. Most of the Buckthorn still standing has been treated with a basal bark herbicide and is dead/dying but will not fall for 3-5 years preventing new desirable hardwoods from establishing. The Buckthorn needs to be removed and volunteer efforts would take 2-3 years (using past removal efforts as a reference).

Rationale for Buckthorn Removal

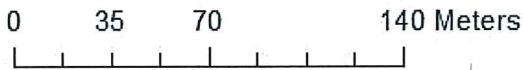
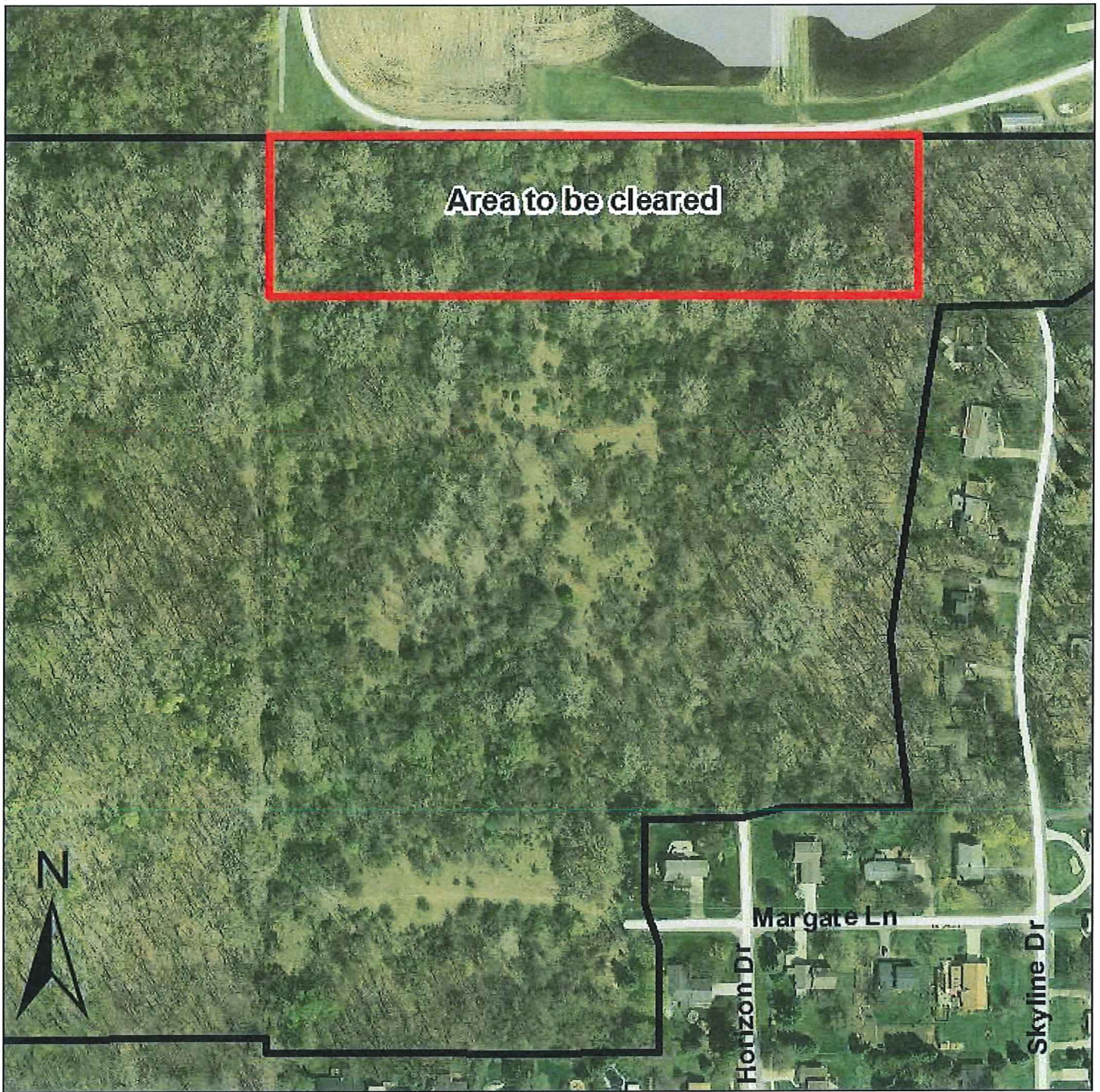
Buckthorn is an invasive plant that creates monocultures lowering diversity and shades out native hardwood trees. The goal of the Towar Woods management plan is to restore a native, hardwood forest and this cannot be accomplished until the large Buckthorns are removed.

Future Plan



The area where the Buckthorns are removed will be planted with native hardwood trees. These trees will be protected with Blue-X tubes like the other seedlings planted on the property.

The following motion is proposed:

MOVE that the Land Preservation Advisory Board approve the expenditure of up to \$10,000.00 of maintenance funds for the purpose of removing 3 acres of invasive Buckthorn 2016 at the Davis Foster Land Preserve.

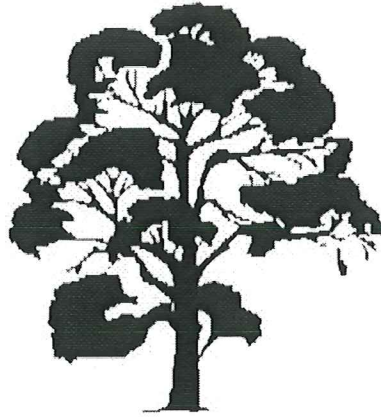


Legend

-  Towar Woods Boundary
-  Streets







Land Preservation Advisory Board Meeting

Land Stewardship Assistant **Reports**

**Stewardship Assistant Report for Kelsey Dillon
Monthly Accomplishments and Updates – Summer 2016**

Davis Foster

- Remainder of seed from the seed ball project was hand cast into the grassland
 - Focused on corner closest to entrance; covered pretty large area (1-2 acres)
 - Hand cast seed onto bare soil patches
- Planning for split-rail fence, bird observation deck and interpretive signage
 - Overall making Davis Foster an outdoor learning environment
- Surveillance at Davis Foster
 - 2 ATVs and one motorbike were caught on film
 - Another cam has been ordered so we can monitor grassland
 - Need rules signs up ASAP

Towar Woods

- Towar woods/Snell Recreation Group
 - Took 20 day campers on an educational hike through Towar Woods
 - They picked up garbage and bagged some garlic mustard
- Towar Woods LPAB Site Visit
 - Pointed out projects in various stages
 - Overall goals for restoration work
- Towar Woods Brush Hog Days
 - Two 9 hour days with brush hog mowing down woody weeds around planted trees
 - Spencer from grounds helped run the machine
 - Dave Caszatt and Sandy Davis volunteered for the whole first day; several volunteers on second day for various times
 - 1 acre cleared; total cost = \$200
- Plans for large-scale clearing being developed
- Grant for Tree Planting from Joe D. Pentecost

Cost of April, 2017, Planting of Hardwood Seedlings:

150 2' by 3' mixed hardwood seedlings @ \$10 ea. =	\$1,500.00
150 Blue X growing tubes @ \$2.33 ea. =	\$350.00
150 Metal support posts @ \$4.00 ea. =	\$600.00
5 gallons glyphosate for grass & weed control	\$150.00
2.5 gallons triclopyr + adjuvant oil (for woody invasive shrub control)	\$400.00
Total	\$3,000.00

SW Meridian Uplands

- Talked to Design by Nature about grassland planting progress:
 - A lot of grasses coming in from 1/4 inch to some large enough to start to seed
 - Unfortunately there are some weeds that were tolerant to the herbicide
 - We planted little bluestem only this spring; later we will plant June and Prairie Dropseed when the weeds are under control
 - A couple more rains will help get the rest of the grasses going, especially in the very sandy, dry sites
 - We wouldn't recommend planting the wildflowers this fall but in the fall of 2017
 - Next spring we would recommend a herbicide treatment to control any cool season grasses and thistle in the project
 - Next spring we will order the wildflower seed and send a proposal to the township
- Township grounds crew will mow the grassland per Vern's recommendation to keep back weeds

Red Cedar Glen

- Report from Frank Hatfield about saplings being cut down at Red Cedar Glen along pathways
 - Put up a trail cam to capture any suspicious behavior

Hartrick Park

- Monarch Garden - Officially certified from Monarch Watch
 - Female monarchs have been laying eggs and caterpillars have been seen on milkweed



Other

- Coffee Break Interview with HOMTV
 - Subject was Land Preserves and the Land Preservation Program
 - Spoke about current projects, good hikes and how to get involved
 - Also talked about invasive species and why we should manage the natural areas
- Presentation on Land Preservation to Park Commission
 - Updates on major 2016 projects

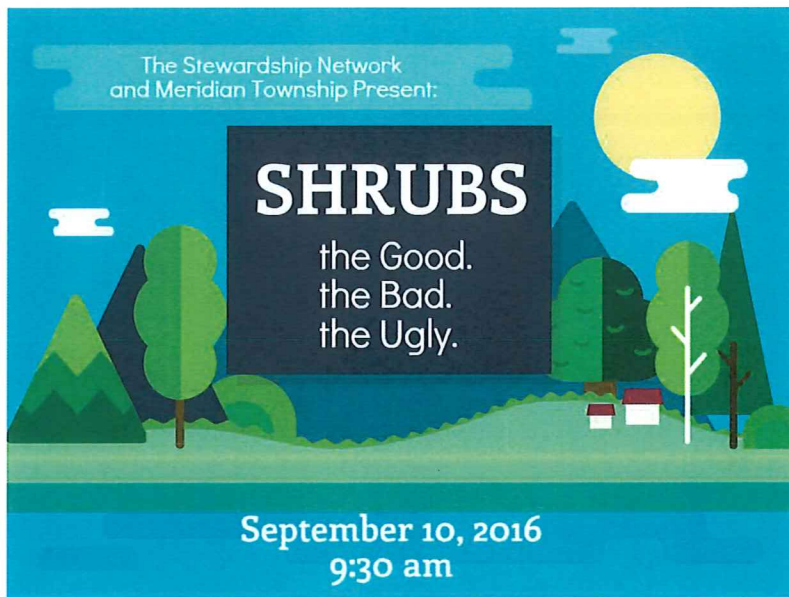
Towar Woods Brush Hog Progress





4





Meet at:
2100 Gaylord C. Smith Court
Haslett, MI 48840

Learn how to ID invasive
and native shrubs

Demonstration on
invasive shrub control

Recommendations on
native shrubs for your yard
or natural area.

Get questions about
invasive plants answered.

This event is FREE but advanced registration is recommended.
Please register on the Stewardship Network Website:
<https://www.stewardshipnetwork.org/shrubs-good-bad-ugly-0>

Brought to you by:

