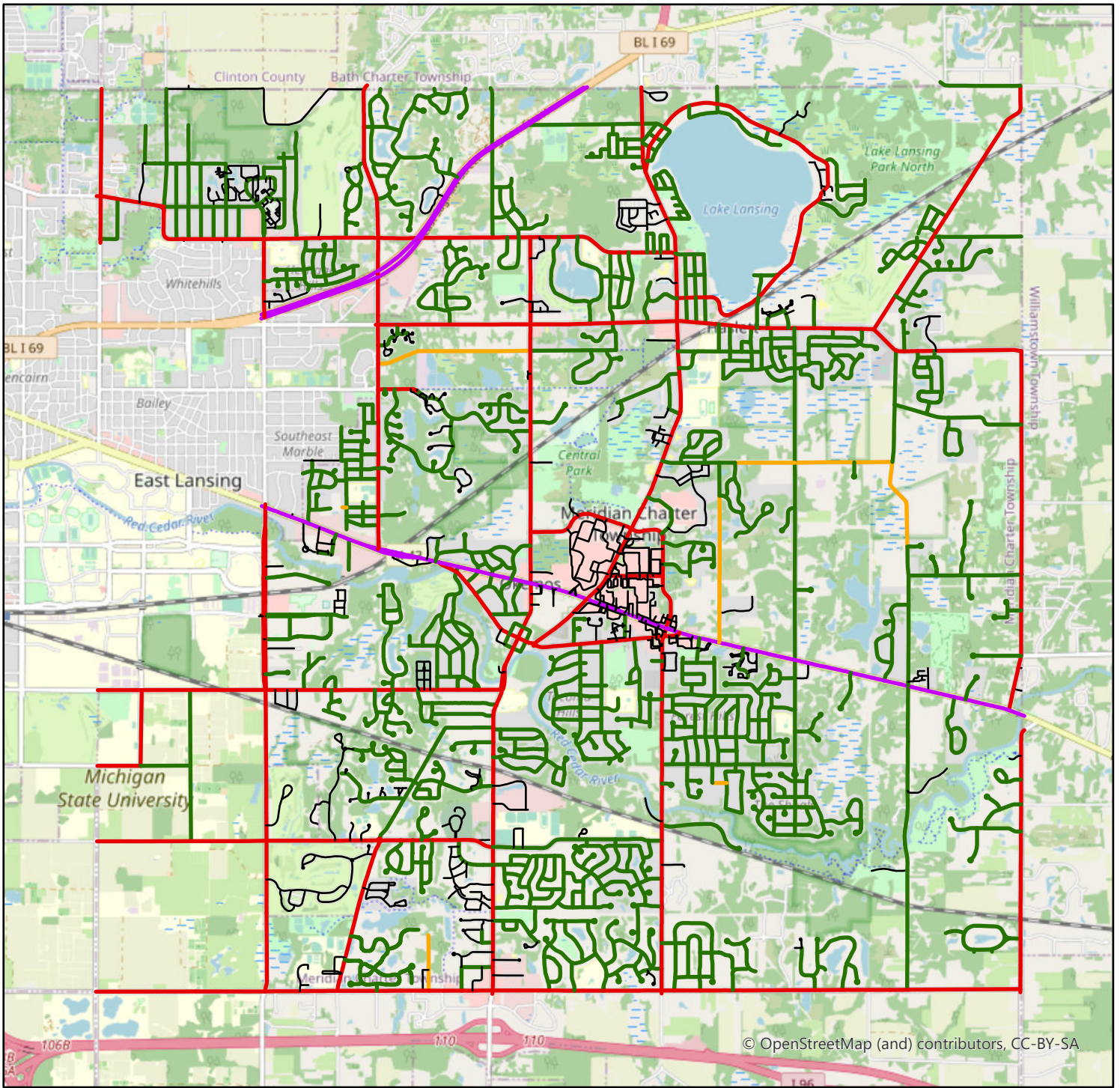


MERIDIAN TOWNSHIP ROAD TYPES



© OpenStreetMap (and) contributors, CC-BY-SA



Legend

Type	
<ul style="list-style-type: none"> — Township Local Road Program dpw@meridian.mi.us 517.853.4440 — Private/Other — Paved County Road roads@ingham.com 517.676.9722 — Gravel County Road roads@ingham.com 517.676.9722 — MDOT State Road michigan.gov/mdot/about/contact-mdot 	

