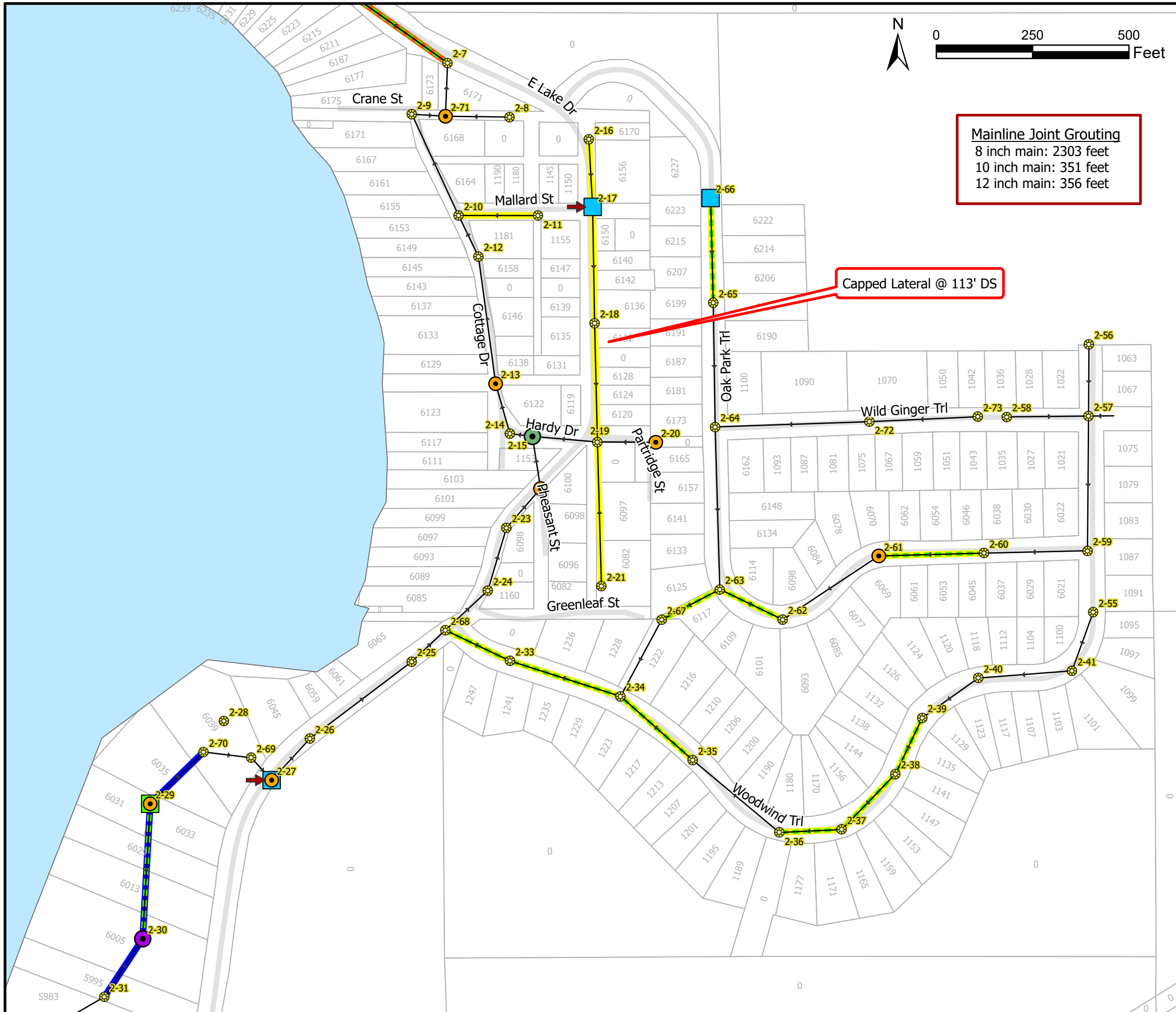


PUBLIC UTILITIES

AT&T 337 N. ABBOTT, RM. 201 EAST LANSING, MI 48823 517.337.3660	TELEPHONE
CONSUMERS ENERGY 530 W. WILLOW ST. P.O. BOX 30162 LANSING, MI 48909 517.373.6100	GAS ELECTRIC
COMCAST 1070 TROWBRIDGE ROAD EAST LANSING, MI 48823 517.332.1012	CABLE TV
MERIDIAN TOWNSHIP 5151 MARSH RD. OKEMOS, MI 48864 517.853.4440	WATER MAINS SANITARY SEWER PATHWAYS
WOLVERINE PIPE LINE 8105 VALLEYWOOD LANE PORTAGE, MI 49024-5251 231.323.2491	PETROLEUM PIPELINE
INGHAM COUNTY DRAIN COMMISSIONER 707 BUHL ST. MASON, MI 48854 517.676.8395	DRAINS STORM SEWER
INGHAM COUNTY ROAD DEPT 301 BUSH ST. MASON, MI 48854 517.676.9722	PUBLIC ROADS AND RIGHTS OF WAY

Meridian Charter Township
Ingham County, Michigan
Sanitary Sewer System

03/24/2020	NN	Bid Plans
11/17/2022	JH	Updated Plans



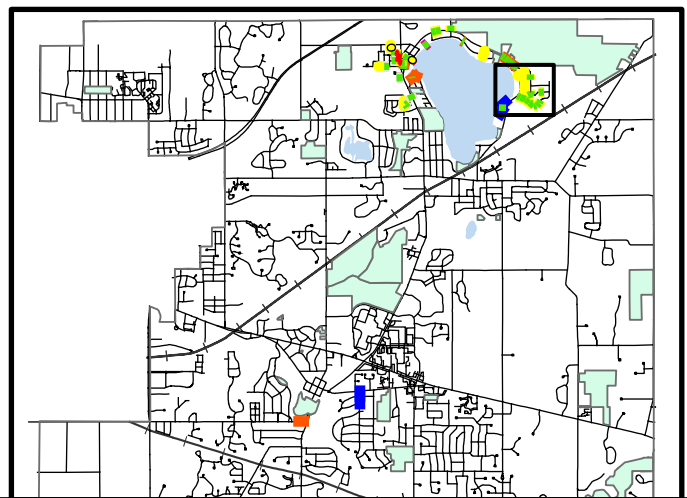
Mainline Joint Grouting
 8 inch main: 2303 feet
 10 inch main: 351 feet
 12 inch main: 356 feet

Capped Lateral @ 113' DS



Pay Items:

	Manhole, Liner, Polymer	1 ea
	Manhole, Liner, Cementitious	1 ea
	Manhole, Grout, Fully Sealed	7 ea
	Dr Structure, Adj, Add Depth	2 ea
	Dr Structure Cover, Adj, Case 1	3 ea
	Dr Structure Cover, Adj, Case 2	1 ea
	Sewer, Joint Grouting, 8"	430 ea
	Sewer, Joint Grouting, 10"	70 ea
	Sewer, Joint Grouting, 12"	65 ea
	Sewer, CIPP, 8"	1366 ft
	Sewer, CIPP, 10"	373 ft
	Sewer, Lateral Connection, Grouting	80 ea

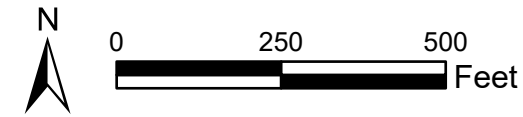


Meridian Charter Township
 Ingham County, Michigan
Sanitary Sewer System

03/24/2020	NN	Bid Plans
11/17/2022	JH	Updated Plans

SANITARY SEWER REHABILITATION 2022
 East of Lake Lansing

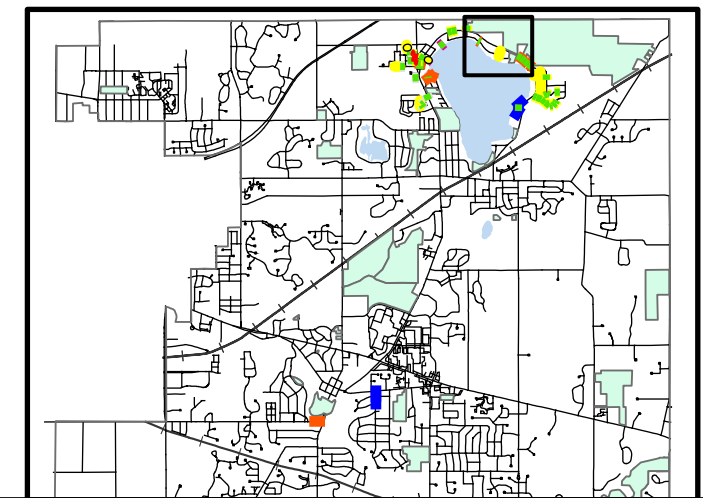
SHEET
 2/7



Mainline Joint Grouting
 8 inch main: 280 feet
 12 inch main: 876 feet

Pay Items:

	Manhole, Liner, Polymer	1 ea
	Manhole, Grout, Fully Sealed	4 ea
	Dr Structure, Adj, Add Depth	1 ea
	Dr Structure Cover, Adj, Case 1	2 ea
	Sewer, Joint Grouting, 8"	56 ea
	Sewer, Joint Grouting, 12"	174 ea
	Sewer, CIPP, 8"	297 ft
	Sewer, Lateral Connection, Grouting	17 ea



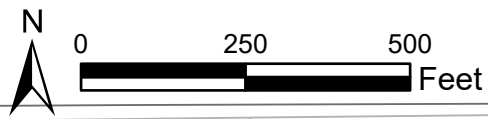
Meridian Charter Township
 Ingham County, Michigan
Sanitary Sewer System

03/24/2020	NN	Bid Plans
11/17/2022	JH	Updated Plans

SANITARY SEWER REHABILITATION 2022
 North of Lake Lansing

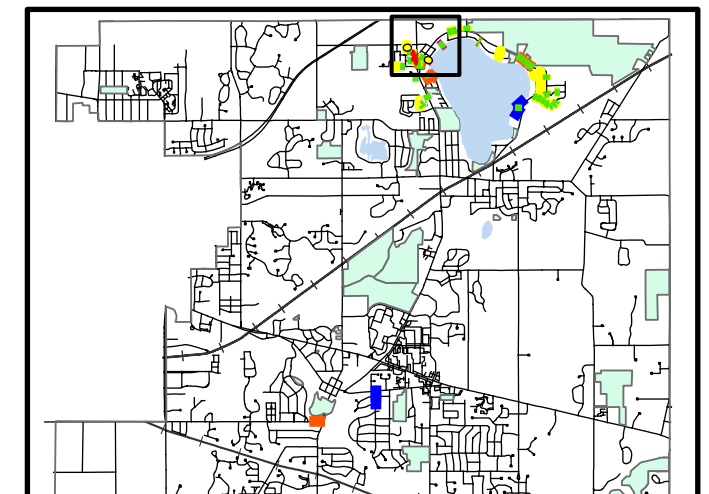
SHEET
 3/7





Pay Items:

	Manhole, Grout, Fully Sealed	7 ea
	Dr Structure, Adj, Add Depth	1 ea
	Manhole, Grout Pipe Connection	1 ea
	Dr Structure Cover, Adj, Case 1	1 ea
	Sewer, Joint Grouting, 8"	324 ea
	Sewer, Joint Grouting, 12"	103 ea
	Sewer, Joint Grouting, 15"	122 ea
	Sewer, Joint Grouting, Spot Treat	4 ea
	Sewer, CIPP, 8"	519 ft
	Sewer, Lateral Connection Liner	2 ea
	Sewer, Lateral Connection, Grouting	47 ea
	Sewer, Sectional CIPP, 8"	2 ea



Sewer, 6' Sectional CIPP, 8"
236' from US MH (3-55)

Sewer, 6' Sectional CIPP, 8"
218' from US MH (3-59)

Mainline Joint Grouting
8 inch main: 1627 feet
10 inch main: 494 feet
12 inch main: 607 feet

Spot Grouting
Runner 3 ft DS of MH 3-43
Runner 250 ft DS of MH 3-54
Runner 162 ft DS of MH 3-165
Runner 206 ft DS of MH 3-165

Meridian Charter Township
Ingham County, Michigan
Sanitary Sewer System

03/24/2020 NN Bid Plans
11/17/2022 JH Updated Plans

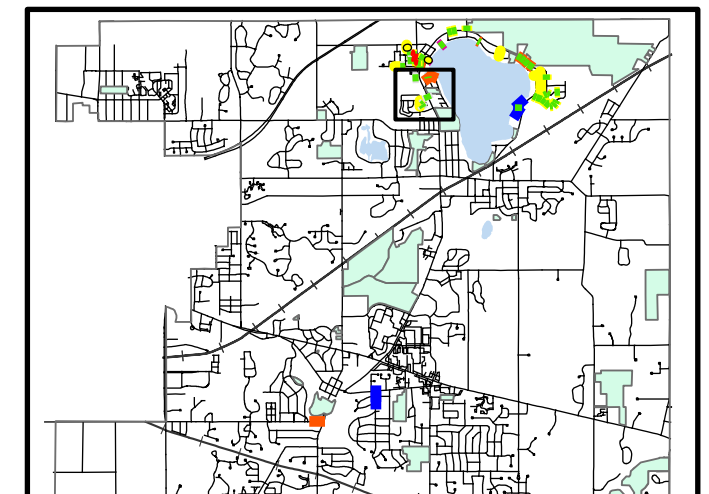


Pay Items:

	Manhole, Channel/Bench Lining	1 ea
	Manhole, Grout, Fully Sealed	11 ea
	Sewer, Joint Grouting, 12"	16 ea
	Sewer, Joint Grouting, Spot Treat	4 ea
	Sewer, CIPP, 8"	309 ft
	Sewer, CIPP, 12"	278 ft
	Sewer, Lateral Connection, Grouting	9 ea

Spot Grouting

Runner 2 ft DS of MH 3-69
 Runner 4 ft DS of MH 3-111
 Runner 67 ft DS of MH 3-110
 Runner 102 ft DS of MH 3-132
 (near intruding lateral)

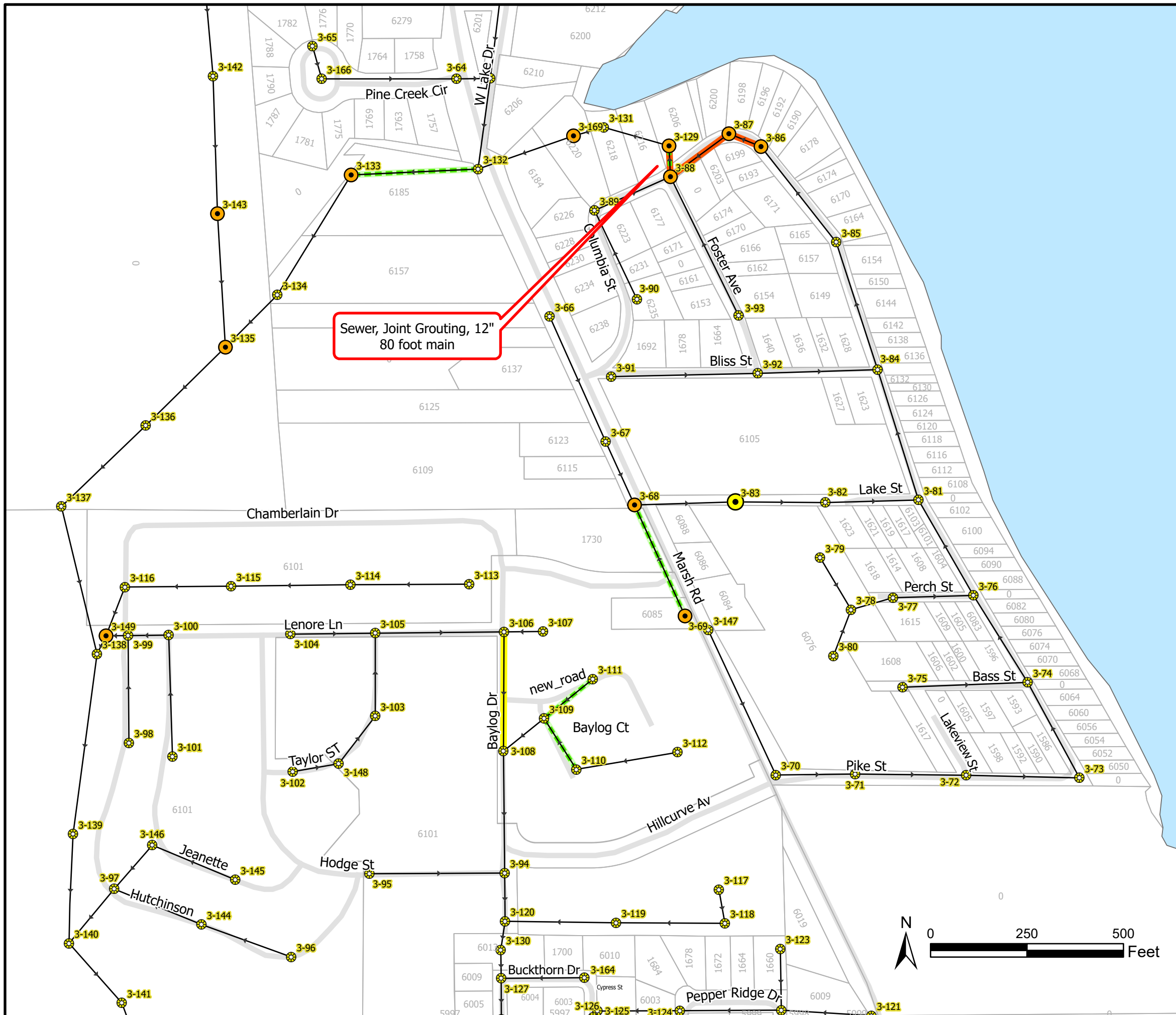


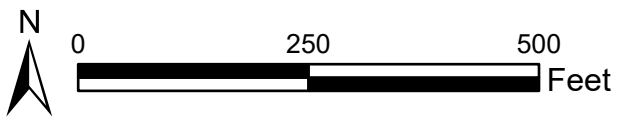
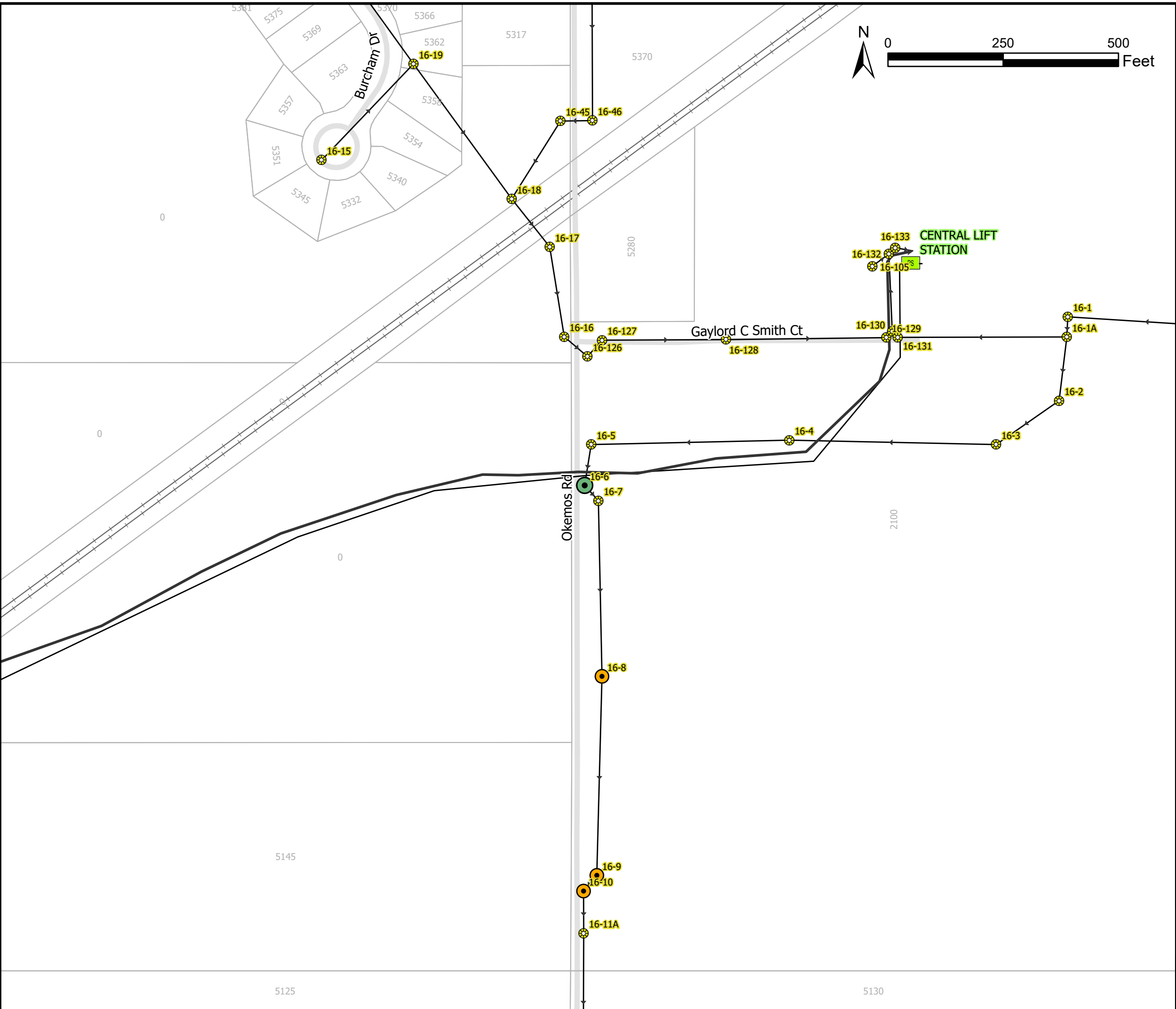
Meridian Charter Township
 Ingham County, Michigan
Sanitary Sewer System

03/24/2020 NN Bid Plans
 11/17/2022 JH Updated Plans

SANITARY SEWER REHABILITATION 2022
 West of Lake Lansing

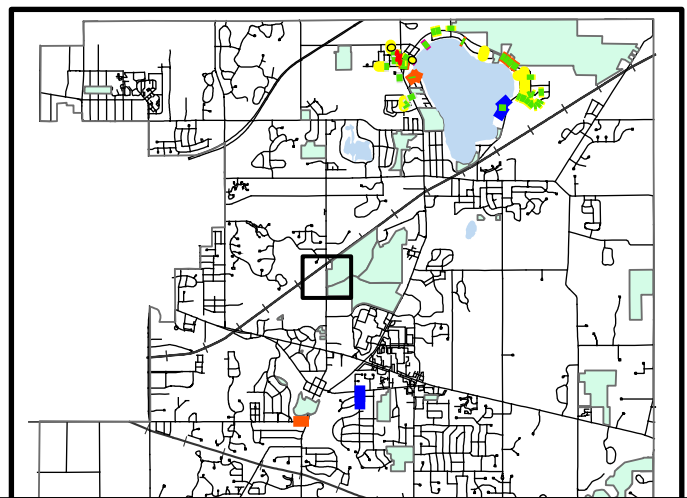
SHEET
 5/7





Pay Items:

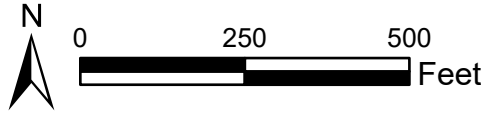
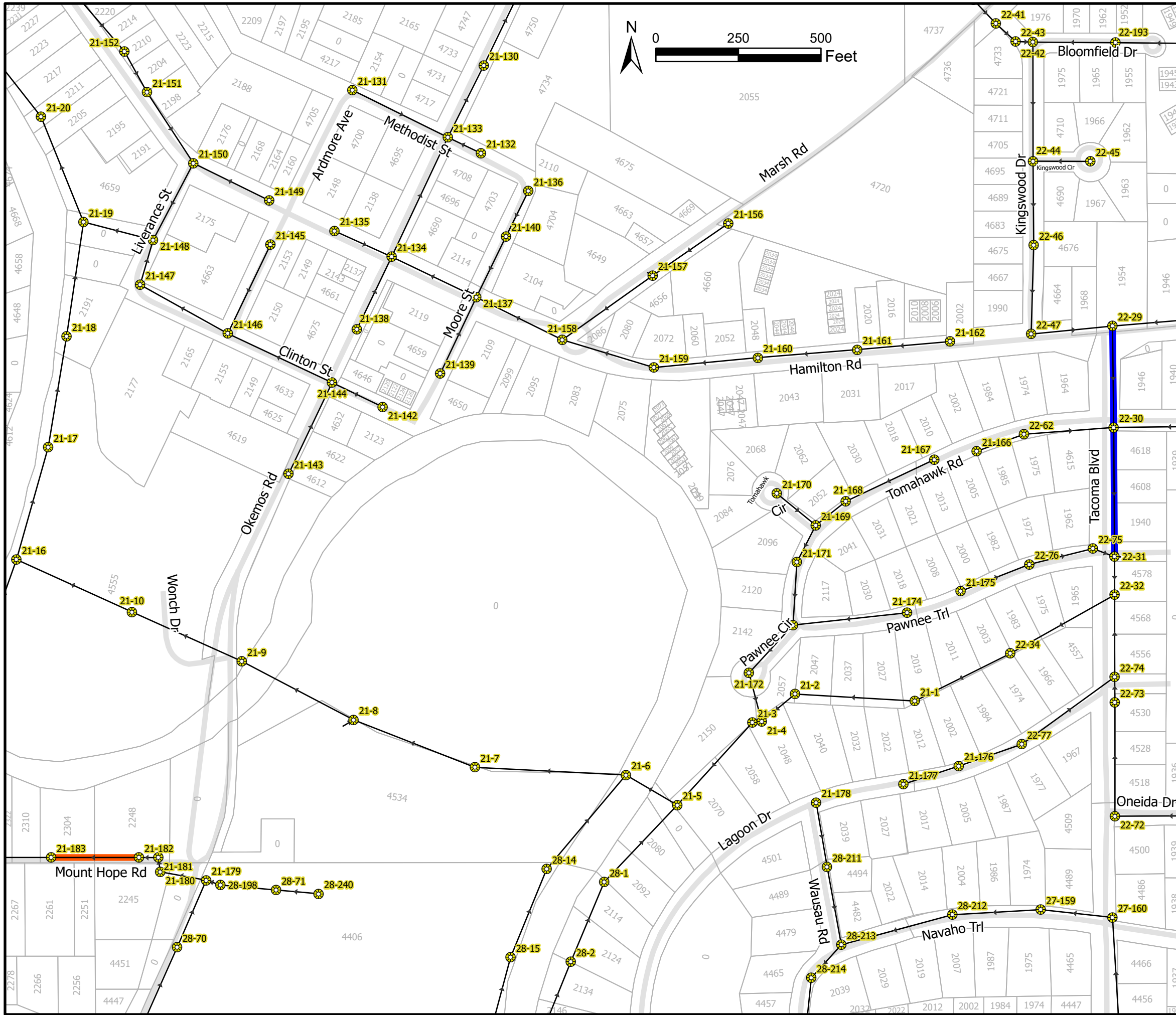
- Manholes, Cementitious Liner 1 ea
- Manholes, Grout, Fully Sealed 3 ea



Meridian Charter Township
 Ingham County, Michigan
Sanitary Sewer System

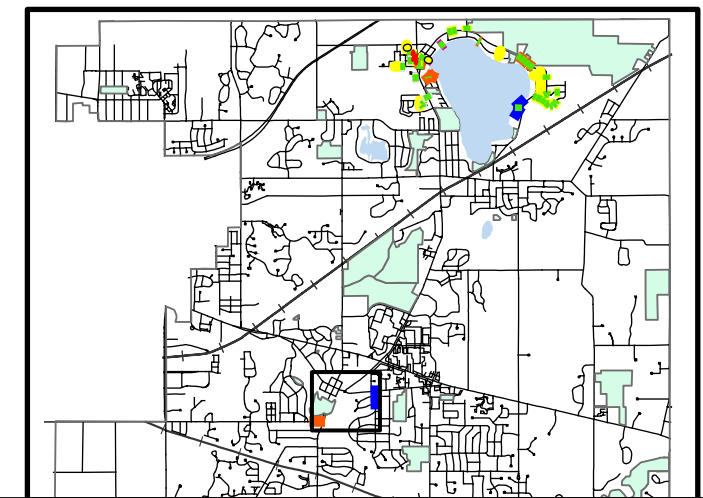
03/24/2020	NN	Bid Plans
11/17/2022	JH	Updated Plans

SANITARY SEWER REHABILITATION 2022	SHEET
Okemos Rd	6/7



Pay Items:

█ Sewer, CIPP, 10"	699 ft
█ Sewer, CIPP, 12"	267 ft
Sewer, Lateral Connection, Grouting	7 ea



Meridian Charter Township
Ingham County, Michigan
Sanitary Sewer System

03/24/2020	NN	Bid Plans
11/17/2022	JH	Updated Plans

SANITARY SEWER REHABILITATION 2022	SHEET
Mount Hope & Tacoma	7/7