

## Meridian Riverfront Park

In 1979, the first 70 acres of Meridian Riverfront Park were acquired in Legg Park. Eastgate Park and the Harris Nature Center were purchased in 1986 with help from the Land and Water Conservation Fund. In 1994, an additional 33 acres were acquired in Legg Park completing the 204 acres you see today. The Harris Nature Center building opened in July of 1997 and welcomes over 20,000 visitors each year. Meridian Riverfront Park has something for everyone including access to the Red Cedar River, over 6 miles of trails lined with abundant spring wildflowers, an accessible paved trail, incredible birding opportunities, a Nature Exploration Area and so much more.

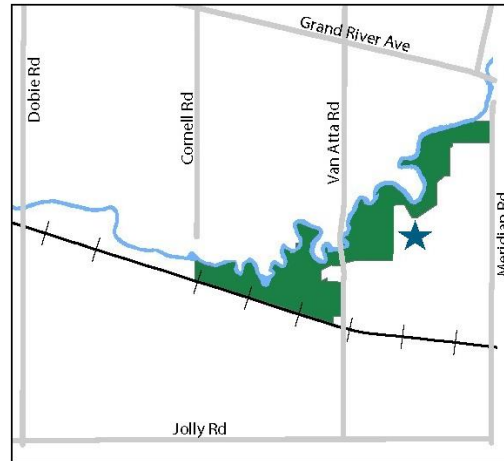
### What's Fair to See?

- Brattin Woods 5851 Okemos Rd
- Central Park 5151 Marsh Rd
  - Central Park South 1990 Central Park Dr
  - Nancy Moore Park 1960 Gaylord C Smith Ct
- Forest Hills Park 4625 Northview Dr
- Hartrick Park 3685 Hulett Rd
- Meridian Riverfront Park
  - Eastgate Park 4203 S Meridian Rd
  - Harris Nature Center 3998 Van Atta Rd
  - Legg Park 3891 Van Atta Rd
- North Meridian Road Park 5191 N Meridian Rd
- Sander Farm Preserve 4344 Dobie Rd
- Tacoma Hills Park 1815 Hamilton Rd
- Ted Black Woods 540 Grand River Ave | 4714 Van Atta Rd
- Towner Road Park 2055 Towner Rd
- Wonch Park 4555 Okemos Rd

For a complete list of Meridian Township parks and their amenities, visit [meridian.mi.us/parksdirectory](http://meridian.mi.us/parksdirectory).

## OPEN DAWN TO DUSK

Legg Park  
3891 Van Atta Rd  
Harris Nature Center  
3998 Van Atta Rd  
Eastgate Park  
4203 S Meridian Rd



### TRAIL CONDITIONS

The trails in Meridian Riverfront Park have both even and uneven terrain and some of the surfaces are universally accessible. During rainy seasons, the trails may become muddy. Please do not ride bikes or horses on the trails at these times.

For detailed information on Meridian Township Park Ordinances, visit [meridian.mi.us](http://meridian.mi.us)

Chapter 54: Parks & Recreation  
Section 26-51

# MERIDIAN RIVERFRONT PARK TRAIL MAP




Parks & Recreation  
Department  
517.853.4600



A PRIME COMMUNITY  
[meridian.mi.us](http://meridian.mi.us)

# MERIDIAN RIVERFRONT PARK

## LEGEND

- |  |  |
|--|--|
|  Park: 204 Acres  |  Bicycle Pump Track         |
|  Parking          |  Nature Exploration Area    |
|  Nature Center    |  Creek                      |
|  Restrooms        |  Red Cedar River            |
|  Observation Deck |  Trailhead                  |
|  Fishing Dock     |  Paved Trail                |
|  Canoe Launch     |  Stairs                     |
|  Picnic Pavilion  |  To Red Cedar Glen Preserve |



**EASTGATE PARK**  
-53 Acres-

**HARRIS NATURE CENTER**  
-48 Acres-

**LEGG PARK**  
-103 Acres-

### Eastgate Park Trails

-  White 0.13 mi
-  Yellow 0.37 mi
-  Black 0.97 mi

### Harris Nature Center Trails

-  Blue 0.35 mi
-  White 0.48 mi
-  Orange 0.81 mi

### Legg Park Trails

-  Red 0.17 mi
-  Black 0.29 mi
-  Yellow 0.65 mi
-  Orange 0.76 mi
-  Blue 0.95 mi

